



## TO16 & TO20

### Threshold Contrast Phantoms

#### TO16

These test objects are designed for quick quantitative assessments of image quality. The results can be plotted on a Threshold Detection Index Curve.

TO 16 is intended for use with Computed Digital Radiography.

144 details (12 sizes x 12 contrasts)  
Size range 11mm to 0.25mm  
Contrast range 0.0014 to 0.924 @ 75kV, 1.5mm Cu filtration



#### TO20

These test objects are designed for quick quantitative assessments of image quality. The results can be plotted on a Threshold Detection Index Curve.

TO 20 is intended for use with Digital Subtraction Fluoroscopy.

144 details (12 sizes x 12 contrasts)  
Size range 11mm to 0.25mm  
Contrast range 0.0014 to 0.924 @ 75kV, 1.5mm Cu filtration





# TO16 & TO20

Threshold Contrast Phantoms

## Product Radiograph

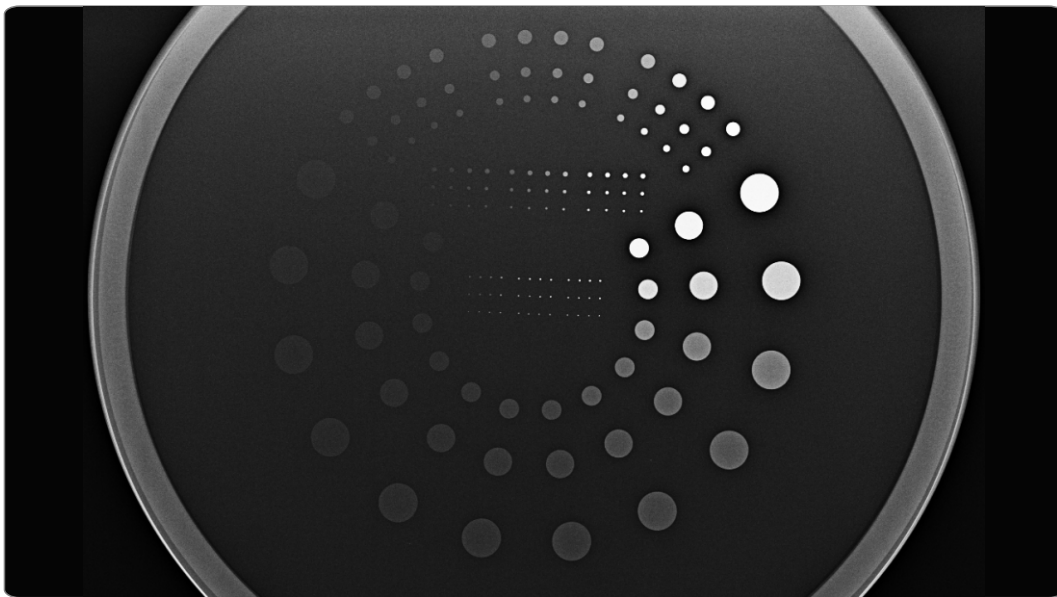


fig. 1 TO16 X-ray image

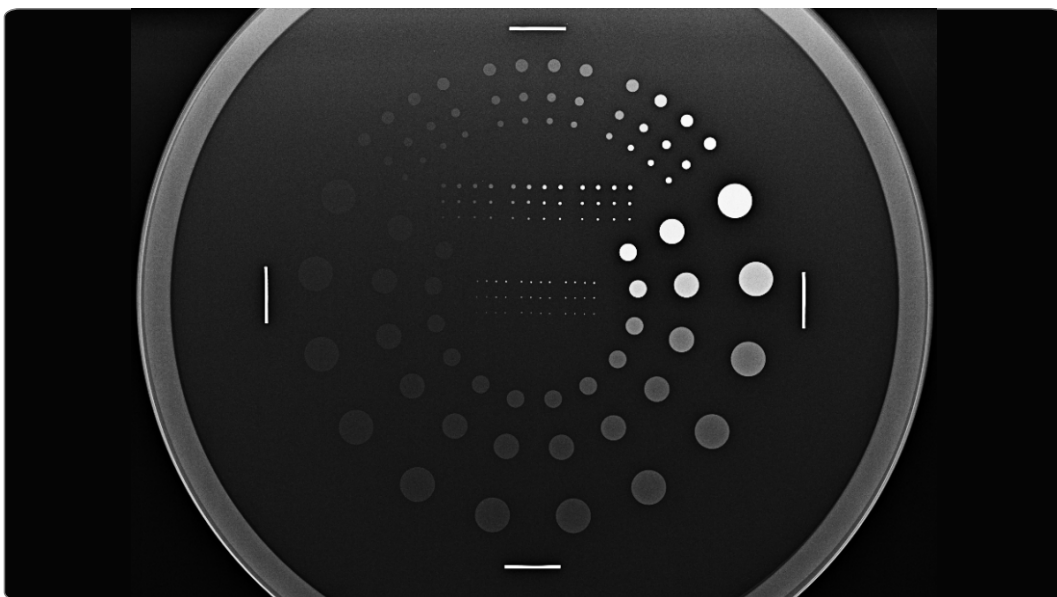


fig. 2 TO20 X-ray image

[www.leadstestobjects.com](http://www.leadstestobjects.com)