



# Radia

## Automatic-Scoring Software

Radia is a software for automatic recognition and analysis of test images of objects (phantoms) used to evaluate image quality. Radia is able to quickly provide reproducible and objective quality indices for routine quality control processes aimed at optimizing the performance of a medical imaging system.

Radia automatically analyses a given digital image and quickly calculates objective, reliable, and reproducible indices to evaluate the performance of a radiological equipment. Then it stores the analysis results and provides control charts with baseline and threshold values in order to keep track of quality trends and abnormal conditions.

The Radia base module provides:

- Batch processing of images
- Automatic tracking, trending and reporting
- Trend comparison with other centres
- Cerebrus file watcher for monitoring of folders and automated processing of incoming files.



**Radia modules\* are available for:**

- TOR 18FG
- SedentexCT IQ
- MagIQ Solo & Duo

\* to be purchased separately from the base module

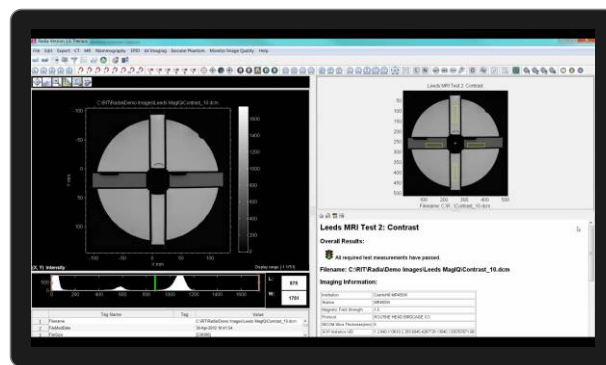


# Radia Software

## Details

### RITCognition

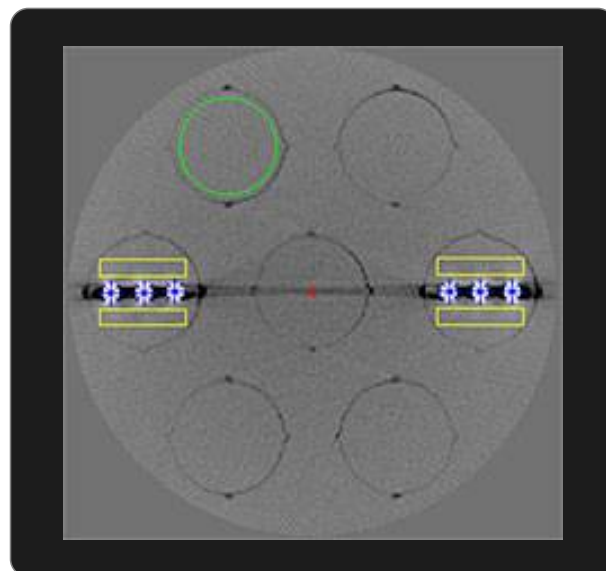
Introduced in version 1.8 of the Radia software, RITCognition automatically recognises the test object scanned and provides analysis.



MagIQ module screenshot

### Comprehensive Analysis

All image quality parameters tested for each object and scored to provide a fast, quantitative, repeatable measurements of imaging performance.



SedentexCT IQ module detail